

ISTRUZIONI PER LA SALDATURA A SCARICA DI CONDENSATORI
INSTRUCTIONS FOR CAPACITOR DISCHARGE WELDING
SCHWEISSANLEITUNG FÜR SPITZENZÜNDUNG
INSTRUCTIONS POUR LE SOUDAGE PAR DÉCHARGE
DE CONDENSATEURS
INSTRUCCIONES DE SOLDADURA POR DESCARGA

		Materiale della base / Workpiece Material								
		ACCIAIO fino a C35 STEEL MAX C35	ACCIAIO fino a C60 STEEL MAX C60	ACCIAIO ZINCATO STEEL ZINC PLATED	ACCIAIO INOX STAINLESS STEEL	OTTONE BRASS	RAME COPPER	Al 99,5	Al Mg3	Al Mg5
Materiale perni Studs Material	ACCIAIO 4.8 RAMATO STEEL 4.8 COPPER PLATED	OK	NO	+ / -	+/-	+/-	+/-	NO	NO	NO
	ACCIAIO INOX A2-50 STAINLESS STEEL A2-50	OK	+/-	+/-	OK	+/-	+/-	NO	NO	NO
	ACCIAIO INOX AISI 316* STAINLESS STEEL AISI 316*	OK	+/-	+/-	OK	+/-	+/-	NO	NO	NO
	ALLUMINIO AIMg3 ALUMINIUM AIMg3	NO	NO	NO	NO	NO	NO	+/-	OK	+/-
	OTTONE / BRASS	OK	NO	OK	+/-	OK	OK	NO	NO	NO

*Per applicazioni nei settori alimentare, chimico farmaceutico, navale, tessile e petrolchimico si consiglia l'uso dell'inox AISI 316. L'inox AISI 316 ha una resistenza alla corrosione ottima (sali, acidi, sostanze alimentari).

*We recommend the use of Stainless Steel AISI 316 for applications in the food, pharmaceutical, naval, textile and petrochemical industries. Stainless Steel AISI 316 has a high resistance to corrosion (salts, acids, food substances).

INFORMAZIONI TECNICHE

TECHNICAL INFORMATION / TECHNISCHE INFORMATIONEN INFORMATION TECHNIQUE / INFORMACION TECNICA

			M3	M4	M5	M6	M8	M10	M12	M16
			Materiale perni / Studs Material	ACCIAIO 4.8 RAMATO STEEL 4.8 COPPER PLATED	Carico di trazione sul filetto (kN) <i>Pull-out force (kN)</i>	1,1	1,8	3,0	4,3	8,0
Coppia di serraggio raccomandata (Nm) <i>Recommended tightening torque (Nm)</i>	0,8	0,8			3,6	6,1	15,0	30,0	53,0	135,0
ACCIAIO INOX A2-50 STAINLESS STEEL A2-50	Carico di trazione sul filetto (kN) <i>Pull-out force (kN)</i>	0,7		0,7	1,9	2,7	4,9	7,8	12,0	22,0
	Coppia di serraggio raccomandata (Nm) <i>Recommended tightening torque (Nm)</i>	0,5		0,5	2,3	3,8	9,5	19,0	33,0	82,0
ACCIAIO INOX AISI 316 STAINLESS STEEL AISI 316	Carico di trazione sul filetto (kN) <i>Pull-out force (kN)</i>	0,7		0,7	1,9	2,7	4,9	7,8	12,0	22,0
	Coppia di serraggio raccomandata (Nm) <i>Recommended tightening torque (Nm)</i>	0,5		0,5	2,3	3,8	9,5	19,0	33,0	82,0
ALLUMINIO AIMg3 ALUMINIUM AIMg3	Carico di trazione sul filetto (kN) <i>Pull-out force (kN)</i>	0,5		0,5	1,6	2,2	4,0			
	Coppia di serraggio raccomandata (Nm) <i>Recommended tightening torque (Nm)</i>	0,4		0,4	1,9	3,1	7,5			
OTTONE BRASS	Carico di trazione sul filetto (kN) <i>Pull-out force (kN)</i>	0,8		0,8	2,3	3,2	6,0			
	Coppia di serraggio raccomandata (Nm) <i>Recommended tightening torque (Nm)</i>	0,6		0,6	2,7	4,5	11,0			

I valori indicati in tabella permettono di non deformare gli elementi da unire.

The values indicated in the table will not deform the parts to be joined.

INDICE GENERALE
GENERAL INDEX
INHALTSVERZEICHNIS
SOMMAIRE GÉNÉRAL
INDICE GENERAL

		PAGINA - PAGE	
PT		PERNI FILETTATI A SALDARE A SCARICA DI CONDENSATORI <i>CAPACITOR DISCHARGE WELDING STUDS WITH THREAD</i>	6-7-8
		PERNI PER LA VERNICIATURA <i>CAPACITOR DISCHARGE GROOVE STUDS FOR PAINTING</i>	6
IT		BUSSOLE FILETTATE A SALDARE A SCARICA DI CONDENSATORI <i>CAPACITOR DISCHARGE TAPPED STUDS</i>	9-10
UT		PERNI LISCI A SALDARE A SCARICA DI CONDENSATORI <i>CAPACITOR DISCHARGE WELDING PINS WITHOUT THREAD</i>	11-12
		PERNI CON FILETTO A DENTE DI SEGA A SCARICA DI CONDENSATORI <i>CAPACITOR DISCHARGE WELDING STUDS WITH COARSE</i>	13
		FASTON SINGOLO <i>SINGLE FLAT PLUG TYP F1</i>	14
		FASTON DOPPIO <i>DOUBLE FLAT PLUG TYP F2</i>	14
		ARPIONCINI PER ISOLAMENTI TERMICI <i>CUPPED HEAD PINS WITH INSULATION</i>	15
		CHIODI PER ISOLAMENTO E CLIP <i>INSULATING NAILS AND CLIP</i>	15

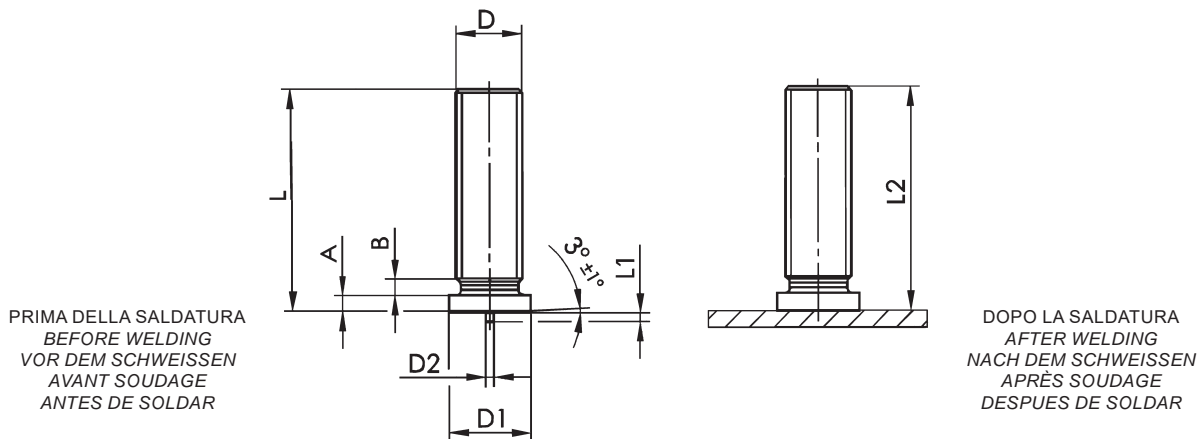
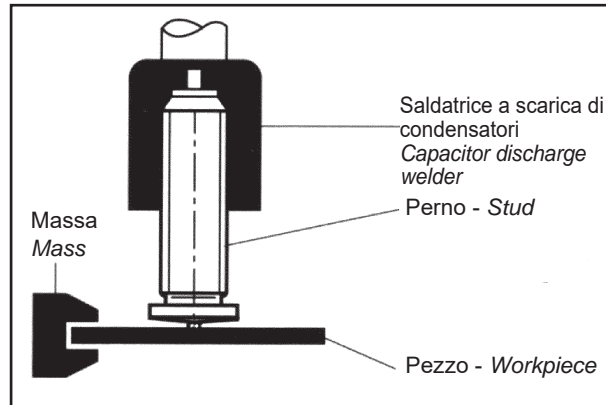
INDICE GENERALE
GENERAL INDEX
INHALTSVERZEICHNIS
SOMMAIRE GÉNÉRAL
INDICE GENERAL

		PAGINA - PAGE	
PS		PERNI A SALDARE AD ARCO CORTO <i>SHORT CYCLE WELDING STUDS</i>	23
IS		BUSSOLE A SALDARE AD ARCO CORTO <i>SHORT CYCLE TAPPED STUDS</i>	24
US		PERNI LISCI A SALDARE AD ARCO CORTO <i>UNTHREADED SHORT CYCLE WELDING STUDS</i>	25
		PERNI CON FILETTO A DENTE DI SEGA A ARCO CORTO <i>SHORT CYCLE WELDING STUDS WITH COARSE</i>	26
		CHIODI PER ISOLAMENTO AD ARCO CORTO <i>SHORT-CYCLE STUDS INSULATION PINS</i>	26
PD MPF	 PF KSP 	PERNI A SALDARE AD ARCO SOLLEVATO CON FERULA CERAMICA <i>DRAWN-ARC STUDS WITH CERAMIC FERRULES</i>	27
RD MR	 RF KSR 	PERNI A SALDARE AD ARCO SOLLEVATO CON FERULA CERAMICA <i>DRAWN-ARC STUDS WITH CERAMIC FERRULES</i>	28
UD / S SD / KD ID / MI	UF KSN	A RICHIESTA <i>ON DEMAND</i>	29

PERNI FILETTATI A SALDARE A SCARICA DI CONDENSATORI
CAPACITOR DISCHARGE WELDING STUDS WITH THREAD
GEWINDEBOLZEN FÜR SPITZENZÜNDUNG
GOUJONS FILETÉS À SOUDER PAR DÉCHARGE
DE CONDENSATEURS
PERNOS CON ROSCA EXTERIOR PARA SOLDAR CON DESCARGA

DIN EN ISO 13918

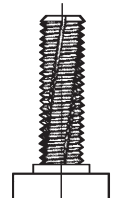
PT



D	L + 0,6	D1 ± 0,2	D2 ± 0,08	L1 ± 0,05	A	B max	L2
M3	vedi pag. 7 - 8	4,5	0,60	0,55	0,7-1,4	0,6	L-0,3
M4		5,5	0,65				
M5		6,5	0,75	0,80			
M6		7,5					
M8		9,0	0,85	0,8-1,4	1,5		
* M10		11,0			2	L-0,6	
* M12	12,6	0,6-1,8					

* M10 - * M12 FIXI STANDARD

PERNI PER LA VERNICIATURA A RICHIESTA
 CAPACITOR DISCHARGE GROOVE STUDS
 FOR PAINTING ON REQUEST
 LACKBOLZEN AUF ANFRAGE
 GOUJONS AVEC RAINURE SUR DEMANDE
 PERNOS SOLDAR LACQUER GROOVE BAJO SOLICITUD



ACCIAIO 4.8 RAMATO COPPER PLATED STEEL 4.8 STAHL 4.8 VERKUPFERT ACIER 4.8 CUIVRE ACERO 4.8 COBREADO			ACCIAIO INOX A2-50 STAINLESS STEEL A2-50 ROSTFREIER STAHL A2-50 INOX A2-50 INOX A2-50			INOX AISI 316 STAINLESS STEEL AISI316 ROSTFREIER STAHL AISI 316 INOX AISI 316 INOX AISI 316			ALLUMINIO AIMg3 ALUMINIUM AIMg3 ALUMINIUM AIMg3 ALUMINIUM AIMg3 ALUMINIO AIMg3			OTTONE CuZn37 BRASS CuZn37 MESSING CuZn37 LAITON CuZn37 LATÓN CuZn37		
Filetto Thread Size	Lunghezza Length	Codice Code	Filetto Thread Size	Lunghezza Length	Codice Code	Filetto Thread Size	Lunghezza Length	Codice Code	Filetto Thread Size	Lunghezza Length	Codice Code	Filetto Thread Size	Lunghezza Length	Codice Code
M3	6	03ARPR306	M3	6	03IXPR306	M3	6	03IXPR306A4	M3	6	03ALPR306	M3	6	03OTPR306
	8	03ARPR308		8	03IXPR308		8	03IXPR308A4		8	03ALPR308		8	03OTPR308
	10	03ARPR310		10	03IXPR310		10	03IXPR310A4		10	03ALPR310		10	03OTPR310
	12	03ARPR312		12	03IXPR312		12	03IXPR312A4		12	03ALPR312		12	03OTPR312
	15	03ARPR315		15	03IXPR315		15	03IXPR315A4		15	03ALPR315		15	03OTPR315
	16	03ARPR316		16	03IXPR316		16	03IXPR316A4		16	03ALPR316		16	03OTPR316
	20	03ARPR320		20	03IXPR320		20	03IXPR320A4		20	03ALPR320		20	03OTPR320
	25	03ARPR325		25	03IXPR325		25	03IXPR325A4		25	03ALPR325		25	03OTPR325
	30	03ARPR330		30	03IXPR330		30	03IXPR330A4		30	03ALPR330		30	03OTPR330
	35	03ARPR335		35	03IXPR335		35	03IXPR335A4		35	03ALPR335		35	03OTPR335
40	03ARPR340	40	03IXPR340	40	03IXPR340A4	40	03ALPR340	40	03OTPR340					
M4	6	03ARPR406	M4	6	03IXPR406	M4	6	03IXPR406A4	M4	6	03ALPR406	M4	6	03OTPR406
	8	03ARPR408		8	03IXPR408		8	03IXPR408A4		8	03ALPR408		8	03OTPR408
	10	03ARPR410		10	03IXPR410		10	03IXPR410A4		10	03ALPR410		10	03OTPR410
	12	03ARPR412		12	03IXPR412		12	03IXPR412A4		12	03ALPR412		12	03OTPR412
	15	03ARPR415		15	03IXPR415		15	03IXPR415A4		15	03ALPR415		15	03OTPR415
	16	03ARPR416		16	03IXPR416		16	03IXPR416A4		16	03ALPR416		16	03OTPR416
	20	03ARPR420		20	03IXPR420		20	03IXPR420A4		20	03ALPR420		20	03OTPR420
	25	03ARPR425		25	03IXPR425		25	03IXPR425A4		25	03ALPR425		25	03OTPR425
	30	03ARPR430		30	03IXPR430		30	03IXPR430A4		30	03ALPR430		30	03OTPR430
	35	03ARPR435		35	03IXPR435		35	03IXPR435A4		35	03ALPR435		35	03OTPR435
	40	03ARPR440		40	03IXPR440		40	03IXPR440A4		40	03ALPR440		40	03OTPR440
	45	03ARPR445		45	03IXPR445		45	03IXPR445A4		45	03ALPR445		45	03OTPR445
50	03ARPR450	50	03IXPR450	50	03IXPR450A4	50	03ALPR450	50	03OTPR450					
M5	6	03ARPR506	M5	6	03IXPR506	M5	6	03IXPR506A4	M5	6	03ALPR506	M5	6	03OTPR506
	8	03ARPR508		8	03IXPR508		8	03IXPR508A4		8	03ALPR508		8	03OTPR508
	10	03ARPR510		10	03IXPR510		10	03IXPR510A4		10	03ALPR510		10	03OTPR510
	12	03ARPR512		12	03IXPR512		12	03IXPR512A4		12	03ALPR512		12	03OTPR512
	15	03ARPR515		15	03IXPR515		15	03IXPR515A4		15	03ALPR515		15	03OTPR515
	16	03ARPR516		16	03IXPR516		16	03IXPR516A4		16	03ALPR516		16	03OTPR516
	20	03ARPR520		20	03IXPR520		20	03IXPR520A4		20	03ALPR520		20	03OTPR520
	25	03ARPR525		25	03IXPR525		25	03IXPR525A4		25	03ALPR525		25	03OTPR525
	30	03ARPR530		30	03IXPR530		30	03IXPR530A4		30	03ALPR530		30	03OTPR530
	35	03ARPR535		35	03IXPR535		35	03IXPR535A4		35	03ALPR535		35	03OTPR535
	40	03ARPR540		40	03IXPR540		40	03IXPR540A4		40	03ALPR540		40	03OTPR540
	45	03ARPR545		45	03IXPR545		45	03IXPR545A4		45	03ALPR545		45	03OTPR545

ACCIAIO 4.8 RAMATO COPPER PLATED STEEL 4.8 STAHL 4.8 VERKUPFERT ACIER 4.8 CUIVRE ACERO 4.8 COBREDO			ACCIAIO INOX A2-50 STAINLESS STEEL A2-50 ROSTFREIER STAHL A2-50 INOX A2-50 INOX A2-50			INOX AISI 316 STAINLESS STEEL AISI316 ROSTFREIER STAHL AISI 316 INOX AISI 316 INOX AISI 316			ALLUMINIO AIMg3 ALUMINIUM AIMg3 ALUMINIUM AIMg3 ALUMINIUM AIMg3 ALUMINIO AIMg3			OTTONE CuZn37 BRASS CuZn37 MESSING CuZn37 LAITON CuZn37 LATON CuZn37		
Filetto Thread Size	Lunghezza Length	Codice Code	Filetto Thread Size	Lunghezza Length	Codice Code	Filetto Thread Size	Lunghezza Length	Codice Code	Filetto Thread Size	Lunghezza Length	Codice Code	Filetto Thread Size	Lunghezza Length	Codice Code
M6	8	03ARPR608	M6	8	03IXPR608	M6	8	03IXPR608A4	M6	8	03ALPR608	M6	8	030TPR608
	10	03ARPR610		10	03IXPR610		10	03IXPR610A4		10	03ALPR610		10	030TPR610
	12	03ARPR612		12	03IXPR612		12	03IXPR612A4		12	03ALPR612		12	030TPR612
	15	03ARPR615		15	03IXPR615		15	03IXPR615A4		15	03ALPR615		15	030TPR615
	16	03ARPR616		16	03IXPR616		16	03IXPR616A4		16	03ALPR616		16	030TPR616
	20	03ARPR620		20	03IXPR620		20	03IXPR620A4		20	03ALPR620		20	030TPR620
	25	03ARPR625		25	03IXPR625		25	03IXPR625A4		25	03ALPR625		25	030TPR625
	30	03ARPR630		30	03IXPR630		30	03IXPR630A4		30	03ALPR630		30	030TPR630
	35	03ARPR635		35	03IXPR635		35	03IXPR635A4		35	03ALPR635		35	030TPR635
	40	03ARPR640		40	03IXPR640		40	03IXPR640A4		40	03ALPR640		40	030TPR640
	45	03ARPR645		45	03IXPR645		45	03IXPR645A4		45	03ALPR645		45	030TPR645
	50	03ARPR650		50	03IXPR650		50	03IXPR650A4		50	03ALPR650		50	030TPR650
55	03ARPR655	55	03IXPR655	55	03IXPR655A4	55	03ALPR655	55	030TPR655					
M8	10	03ARPR810	M8	10	03IXPR810	M8	10	03IXPR810A4	M8	10	03ALPR810	M8	10	030TPR810
	12	03ARPR812		12	03IXPR812		12	03IXPR812A4		12	03ALPR812		12	030TPR812
	15	03ARPR815		15	03IXPR815		15	03IXPR815A4		15	03ALPR815		14	030TPR814
	16	03ARPR816		16	03IXPR816		16	03IXPR816A4		16	03ALPR816		16	030TPR816
	20	03ARPR820		20	03IXPR820		20	03IXPR820A4		20	03ALPR820		20	030TPR820
	25	03ARPR825		25	03IXPR825		25	03IXPR825A4		25	03ALPR825		25	030TPR825
	30	03ARPR830		30	03IXPR830		30	03IXPR830A4		30	03ALPR830		30	030TPR830
	35	03ARPR835		35	03IXPR835		35	03IXPR835A4		35	03ALPR835		35	030TPR835
	40	03ARPR840		40	03IXPR840		40	03IXPR840A4		40	03ALPR840		40	030TPR840
	45	03ARPR845		45	03IXPR845		45	03IXPR845A4		45	03ALPR845		45	030TPR845
	50	03ARPR850		50	03IXPR850		50	03IXPR850A4		50	03ALPR850		50	030TPR850
60	03ARPR860	60	03IXPR860	60	03IXPR860A4	60	03ALPR860	60	030TPR860					
M10	12	03ARPR1012	M10	12	03IXPR1012	M10	12	03IXPR1012	M10	12	03ALPR1012	M10	12	030TPR1012
	15	03ARPR1015		15	03IXPR1015		15	03IXPR1015		15	03ALPR1015		15	030TPR1015
	16	03ARPR1016		16	03IXPR1016		16	03IXPR1016		16	03ALPR1016		16	030TPR1016
	20	03ARPR1020		20	03IXPR1020		20	03IXPR1020		20	03ALPR1020		20	030TPR1020
	25	03ARPR1025		25	03IXPR1025		25	03IXPR1025		25	03ALPR1025		25	030TPR1025
	30	03ARPR1030		30	03IXPR1030		30	03IXPR1030		30	03ALPR1030		30	030TPR1030
	35	03ARPR1035		35	03IXPR1035		35	03IXPR1035		35	03ALPR1035		35	030TPR1035
	40	03ARPR1040		40	03IXPR1040		40	03IXPR1040		40	03ALPR1040		40	030TPR1040
45	03ARPR1045	45	03IXPR1045	45	03IXPR1045	45	03ALPR1045	45	030TPR1045					
50	03ARPR1050	50	03IXPR1050	50	03IXPR1050	50	03ALPR1050	50	030TPR1050					
M12	15	03ARPR1215	M12	15	03IXPR1215	M12	15	03IXPR1215	M12	15	03ALPR1215	M12	15	030TPR1215
	16	03ARPR1216		16	03IXPR1216		16	03IXPR1216		16	03ALPR1216		16	030TPR1216
	20	03ARPR1220		20	03IXPR1220		20	03IXPR1220		20	03ALPR1220		20	030TPR1220
	25	03ARPR1225		25	03IXPR1225		25	03IXPR1225		25	03ALPR1225		25	030TPR1225
	30	03ARPR1230		30	03IXPR1230		30	03IXPR1230		30	03ALPR1230		30	030TPR1230
	35	03ARPR1235		35	03IXPR1235		35	03IXPR1235		35	03ALPR1235		35	030TPR1235
40	03ARPR1240	40	03IXPR1240	40	03IXPR1240	40	03ALPR1240	40	030TPR1240					

BUSSOLE FILETTATE A SALDARE A SCARICA DI CONDENSATORI

CAPACITOR DISCHARGE TAPPED STUDS

INNENGEWINDEBUCHSEN FÜR SPITZENZÜNDUNG

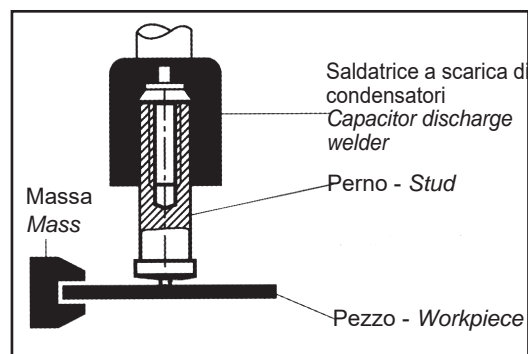
DOUILLES TARAUDÉES À SOUDER PAR DÉCHARGE

DE CONDENSATEURS

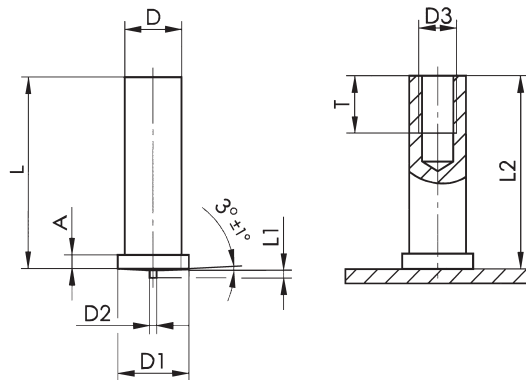
PERNOS CON ROSCA INTERIOR PARA SOLDAR CON DESCARGA

DIN EN ISO 13918

IT



PRIMA DELLA SALDATURA
BEFORE WELDING
VOR DEM SCHWEISSEN
AVANT SOUDAGE
ANTES DE SOLDAR



DOPO LA SALDATURA
AFTER WELDING
NACH DEM SCHWEISSEN
APRÈS SOUDAGE
DESPUES DE SOLDAR

D ± 0,1	L + 0,3	D1 ± 0,2	D2 ± 0,08	L1 ± 0,05	A	D3	T + 0,5	L2
ø5	vedi pag. 10 see page 10	6,5	0,75	0,80	0,7-1,4	M3	5	L-0,3
ø6		7,5				M4	6	
ø7,1		9		0,85	0,8-1,4	M5	7,5	
* ø8		11,6				M6		
* ø10,8					0,6-1,8	M8	10	

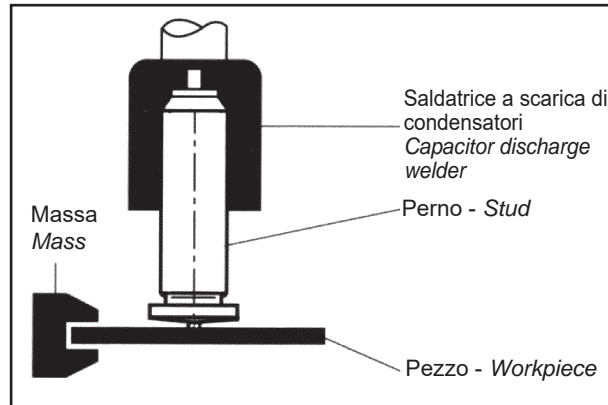
* ø8 - * ø10 FIXI STANDARD

ACCIAIO 4.8 RAMATO COPPER PLATED STEEL 4.8 STAHL 4.8 VERKUPFERT ACIER 4.8 CUIVRE ACERO 4.8 COBREADO			ACCIAIO INOX STAINLESS STEEL ROSTFREIER STAHL INOX INOX			ALLUMINIO AlMg3 ALUMINIUM AlMg3 ALUMINIUM AlMg3 ALUMINIUM AlMg3 ALUMINIO AlMg3			OTTONE CuZn37 BRASS CuZn37 MESSING CuZn37 LAITON CuZn37 LATON CuZn37		
Filetto Thread Size	Lunghezza Length	Codice Code	Filetto Thread Size	Lunghezza Length	Codice Code	Filetto Thread Size	Lunghezza Length	Codice Code	Filetto Thread Size	Lunghezza Length	Codice Code
M3	6	03ARBU3506	M3	6	03IXBU3506	M3	6	03ALBU3506	M3	6	03OTBU3506
	8	03ARBU3508		8	03IXBU3508		8	03ALBU3508		8	03OTBU3508
	10	03ARBU3510		10	03IXBU3510		10	03ALBU3510		10	03OTBU3510
	12	03ARBU3512		12	03IXBU3512		12	03ALBU3512		12	03OTBU3512
	15	03ARBU3515		15	03IXBU3515		15	03ALBU3515		15	03OTBU3515
	16	03ARBU3516		16	03IXBU3516		16	03ALBU3516		16	03OTBU3516
	20	03ARBU3520		20	03IXBU3520		20	03ALBU3520		20	03OTBU3520
	25	03ARBU3525		25	03IXBU3525		25	03ALBU3525		25	03OTBU3525
	30	03ARBU3530		30	03IXBU3530		30	03ALBU3530		30	03OTBU3530
M4	8	03ARBU4608	M4	8	03IXBU4608	M4	8	03ALBU4608	M4	8	03OTBU4608
	10	03ARBU4610		10	03IXBU4610		10	03ALBU4610		10	03OTBU4610
	12	03ARBU4612		12	03IXBU4612		12	03ALBU4612		12	03OTBU4612
	15	03ARBU4615		15	03IXBU4615		15	03ALBU4615		15	03OTBU4615
	16	03ARBU4616		16	03IXBU4616		16	03ALBU4616		16	03OTBU4616
	20	03ARBU4620		20	03IXBU4620		20	03ALBU4620		20	03OTBU4620
	25	03ARBU4625		25	03IXBU4625		25	03ALBU4625		25	03OTBU4625
	30	03ARBU4630		30	03IXBU4630		30	03ALBU4630		30	03OTBU4630
	35	03ARBU4635		35	03IXBU4635		35	03ALBU4635		35	03OTBU4635
	40	03ARBU4640		40	03IXBU4640		40	03ALBU4640		40	03OTBU4640
M5	10	03ARBU5710	M5	10	03IXBU5710	M5	10	03ALBU5710	M5	10	03OTBU5710
	12	03ARBU5712		12	03IXBU5712		12	03ALBU5712		12	03OTBU5712
	15	03ARBU5715		15	03IXBU5715		15	03ALBU5715		15	03OTBU5715
	16	03ARBU5716		16	03IXBU5716		16	03ALBU5716		16	03OTBU5716
	20	03ARBU5720		20	03IXBU5720		20	03ALBU5720		20	03OTBU5720
	25	03ARBU5725		25	03IXBU5725		25	03ALBU5725		25	03OTBU5725
	30	03ARBU5730		30	03IXBU5730		30	03ALBU5730		30	03OTBU5730
	35	03ARBU5735		35	03IXBU5735		35	03ALBU5735		35	03OTBU5735
	40	03ARBU5740		40	03IXBU5740		40	03ALBU5740		40	03OTBU5740
M6	10	03ARBU6810	M6	10	03IXBU6810	M6	10	03ALBU6810	M6	10	03OTBU6810
	12	03ARBU6812		12	03IXBU6812		12	03ALBU6812		12	03OTBU6812
	15	03ARBU6815		15	03IXBU6815		15	03ALBU6815		15	03OTBU6815
	16	03ARBU6816		16	03IXBU6816		16	03ALBU6816		16	03OTBU6816
	20	03ARBU6820		20	03IXBU6820		20	03ALBU6820		20	03OTBU6820
	25	03ARBU6825		25	03IXBU6825		25	03ALBU6825		25	03OTBU6825
	30	03ARBU6830		30	03IXBU6830		30	03ALBU6830		30	03OTBU6830
	35	03ARBU6835		35	03IXBU6835		35	03ALBU6835		35	03OTBU6835
	40	03ARBU6840		40	03IXBU6840		40	03ALBU6840		40	03OTBU6840
M8	15	03ARBU81015	M8	15	03IXBU81015	M8	15	03ALBU81015	M8	15	03OTBU81015
	16	03ARBU81016		16	03IXBU81016		16	03ALBU81016		16	03OTBU81016
	20	03ARBU81020		20	03IXBU81020		20	03ALBU81020		20	03OTBU81020
	25	03ARBU81025		25	03IXBU81025		25	03ALBU81025		25	03OTBU81025
	30	03ARBU81030		30	03IXBU81030		30	03ALBU81030		30	03OTBU81030
	35	03ARBU81035		35	03IXBU81035		35	03ALBU81035		35	03OTBU81035
	40	03ARBU81040		40	03IXBU81040		40	03ALBU81040		40	03OTBU81040

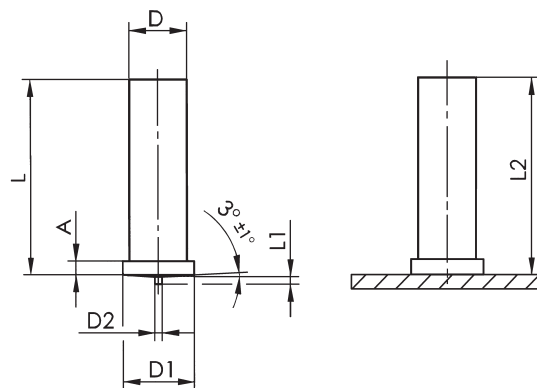
PERNI LISCI A SALDARE A SCARICA DI CONDENSATORI
CAPACITOR DISCHARGE WELDING PINS WITHOUT THREAD
GOUJONS LISSES À SOUDER PAR DÉCHARGE
DE CONDENSATEURS
PERNOS SIN ROSCA PARA SOLDAR CON DESCARGA

DIN EN ISO 13918

UT



PRIMA DELLA SALDATURA
 BEFORE WELDING
 VOR DEM SCHWEISSEN
 AVANT SOUDAGE
 ANTES DE SOLDAR



DOPO LA SALDATURA
 AFTER WELDING
 NACH DEM SCHWEISSEN
 APRÈS SOUDAGE
 DESPUES DE SOLDAR

D ± 0,1	L + 0,6	D1 ± 0,2	D2 ± 0,08	L1 ± 0,05	A	L2
ø3	vedi pag. 12 see page 12	4,5	0,60	0,55	0,7-1,4	L-0,3
ø4		5,5	0,65			
ø5		6,5	0,75	0,80		
ø6		7,5				
ø7,1		0,85	9,0	0,8-1,4		
ø8			11,6	0,8-1,8	L-0,6	
* ø10,8						

* ø10,8 FIXI STANDARD

ACCIAIO 4.8 RAMATO
 COPPER PLATED STEEL 4.8
 STAHL 4.8 VERKUPFERT
 ACIER 4.8 CUIVRE
 ACERO 4.8 COBREDO

Diametro Diameter	Lunghezza Length	Codice Code
Ø 3	6	03ARPL306
	8	03ARPL308
	10	03ARPL310
	12	03ARPL312
	15	03ARPL315
	16	03ARPL316
	20	03ARPL320
	25	03ARPL325
Ø 4	30	03ARPL330
	6	03ARPL406
	8	03ARPL408
	10	03ARPL410
	12	03ARPL412
	15	03ARPL415
	16	03ARPL416
	20	03ARPL420
Ø 5	25	03ARPL425
	30	03ARPL430
	35	03ARPL435
	8	03ARPL508
	10	03ARPL510
	12	03ARPL512
	15	03ARPL515
	16	03ARPL516
Ø 6	20	03ARPL520
	25	03ARPL525
	30	03ARPL530
	35	03ARPL535
	40	03ARPL540
	50	03ARPL550
	8	03ARPL608
	10	03ARPL610
Ø 7,1	12	03ARPL612
	15	03ARPL615
	16	03ARPL616
	20	03ARPL620
	25	03ARPL625
	30	03ARPL630
	35	03ARPL635
	40	03ARPL640
Ø 8	45	03ARPL645
	50	03ARPL650
	10	03ARPL710
	12	03ARPL712
	15	03ARPL715
	16	03ARPL716
	20	03ARPL720
	25	03ARPL725
Ø 10,8	30	03ARPL730
	35	03ARPL735
	40	03ARPL740
	45	03ARPL745
	50	03ARPL750
	55	03ARPL755
	12	03ARPL812
	15	03ARPL815
Ø 10,8	16	03ARPL816
	20	03ARPL820
	25	03ARPL825
	30	03ARPL830
	35	03ARPL835
	40	03ARPL840
Ø 10,8	15	03ARPL1015
	20	03ARPL1020
	25	03ARPL1025
	30	03ARPL1030
	35	03ARPL1035
	40	03ARPL1040

ACCIAIO INOX A2-50
 STAINLESS STEEL A2-50
 ROSTFREIER STAHL A2-50
 INOX A2-50
 INOX A2-50

Diametro Diameter	Lunghezza Length	Codice Code
Ø 3	6	03IXPL306
	8	03IXPL308
	10	03IXPL310
	12	03IXPL312
	15	03IXPL315
	16	03IXPL316
	20	03IXPL320
	25	03IXPL325
Ø 4	30	03IXPL330
	6	03IXPL406
	8	03IXPL408
	10	03IXPL410
	12	03IXPL412
	15	03IXPL415
	16	03IXPL416
	20	03IXPL420
Ø 5	25	03IXPL425
	30	03IXPL430
	35	03IXPL435
	8	03IXPL508
	10	03IXPL510
	12	03IXPL512
	15	03IXPL515
	16	03IXPL516
Ø 6	20	03IXPL520
	25	03IXPL525
	30	03IXPL530
	35	03IXPL535
	40	03IXPL540
	50	03IXPL550
	8	03IXPL608
	10	03IXPL610
Ø 7,1	12	03IXPL612
	15	03IXPL615
	16	03IXPL616
	20	03IXPL620
	25	03IXPL625
	30	03IXPL630
	35	03IXPL635
	40	03IXPL640
Ø 8	45	03IXPL645
	50	03IXPL650
	10	03IXPL710
	12	03IXPL712
	15	03IXPL715
	16	03IXPL716
	20	03IXPL720
	25	03IXPL725
Ø 10,8	30	03IXPL730
	35	03IXPL735
	40	03IXPL740
	45	03IXPL745
	50	03IXPL750
	55	03IXPL755
Ø 10,8	12	03IXPL812
	15	03IXPL815
	16	03IXPL816
	20	03IXPL820
	25	03IXPL825
	30	03IXPL830
Ø 10,8	35	03IXPL835
	40	03IXPL840
	15	03IXPL1015
	20	03IXPL1020
	25	03IXPL1025
	30	03IXPL1030
Ø 10,8	35	03IXPL1035
	40	03IXPL1040

ALLUMINIO AIMg3
 ALUMINIUM AIMg3
 ALUMINIUM AIMg3
 ALUMINIUM AIMg3
 ALUMINIO AIMg3

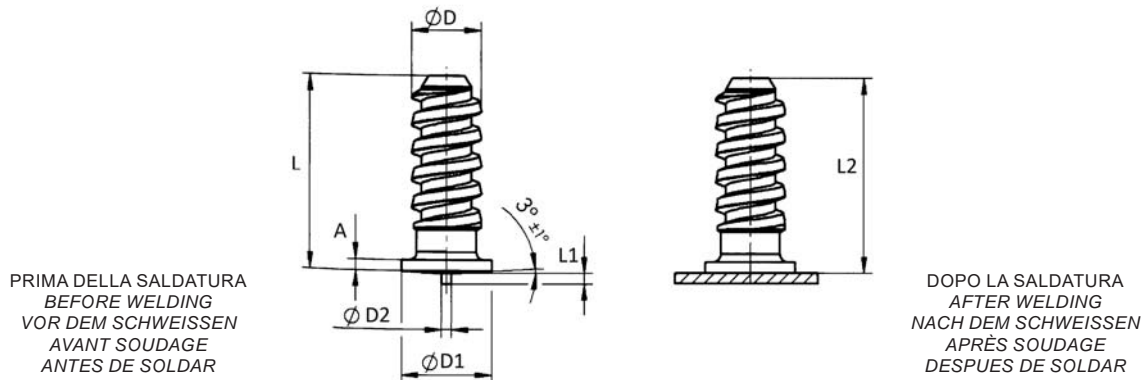
Diametro Diameter	Lunghezza Length	Codice Code
Ø 3	6	03ALPL306
	8	03ALPL308
	10	03ALPL310
	12	03ALPL312
	15	03ALPL315
	16	03ALPL316
	20	03ALPL320
	25	03ALPL325
Ø 4	30	03ALPL330
	6	03ALPL406
	8	03ALPL408
	10	03ALPL410
	12	03ALPL412
	15	03ALPL415
	16	03ALPL416
	20	03ALPL420
Ø 5	25	03ALPL425
	30	03ALPL430
	35	03ALPL435
	8	03ALPL508
	10	03ALPL510
	12	03ALPL512
	15	03ALPL515
	16	03ALPL516
Ø 6	20	03ALPL520
	25	03ALPL525
	30	03ALPL530
	35	03ALPL535
	40	03ALPL540
	50	03ALPL550
	8	03ALPL608
	10	03ALPL610
Ø 7,1	12	03ALPL612
	15	03ALPL615
	16	03ALPL616
	20	03ALPL620
	25	03ALPL625
	30	03ALPL630
	35	03ALPL635
	40	03ALPL640
Ø 8	45	03ALPL645
	50	03ALPL650
	10	03ALPL710
	12	03ALPL712
	15	03ALPL715
	16	03ALPL716
	20	03ALPL720
	25	03ALPL725
Ø 10,8	30	03ALPL730
	35	03ALPL735
	40	03ALPL740
	45	03ALPL745
	50	03ALPL750
	55	03ALPL755
	12	03ALPL812
	15	03ALPL815
Ø 10,8	16	03ALPL816
	20	03ALPL820
	25	03ALPL825
	30	03ALPL830
	35	03ALPL835
	40	03ALPL840
Ø 10,8	15	03ALPL1015
	20	03ALPL1020
	25	03ALPL1025
	30	03ALPL1030
	35	03ALPL1035
	40	03ALPL1040

OTTONE CuZn37
 BRASS CuZn37
 MESSING CuZn37
 LAITON CuZn37
 LATÓN CuZn37

Diametro Diameter	Lunghezza Length	Codice Code
Ø 3	6	03OTPL306
	8	03OTPL308
	10	03OTPL310
	12	03OTPL312
	15	03OTPL315
	16	03OTPL316
	20	03OTPL320
	25	03OTPL325
Ø 4	30	03OTPL330
	6	03OTPL406
	8	03OTPL408
	10	03OTPL410
	12	03OTPL412
	15	03OTPL415
	16	03OTPL416
	20	03OTPL420
Ø 5	25	03OTPL425
	30	03OTPL430
	35	03OTPL435
	8	03OTPL508
	10	03OTPL510
	12	03OTPL512
	15	03OTPL515
	16	03OTPL516
Ø 6	20	03OTPL520
	25	03OTPL525
	30	03OTPL530
	35	03OTPL535
	40	03OTPL540
	50	03OTPL550
	8	03OTPL608
	10	03OTPL610
Ø 7,1	12	03OTPL612
	15	03OTPL615
	16	03OTPL616
	20	03OTPL620
	25	03OTPL625
	30	03OTPL630
	35	03OTPL635
	40	03OTPL640
Ø 8	45	03OTPL645
	50	03OTPL650
	10	03OTPL710
	12	03OTPL712
	15	03OTPL715
	16	03OTPL716
	20	03OTPL720
	25	03OTPL725
Ø 10,8	30	03OTPL730
	35	03OTPL735
	40	03OTPL740
	45	03OTPL745
	50	03OTPL750
	55	03OTPL755
	12	03OTPL812
	15	03OTPL815
Ø 10,8	16	03OTPL816
	20	03OTPL820
	25	03OTPL825
	30	03OTPL830
	35	03OTPL835
	40	03OTPL840
Ø 10,8	15	03OTPL1015
	20	03OTPL1020
	25	03OTPL1025
	30	03OTPL1030
	35	03OTPL1035
	40	03OTPL1040

PERNI CON FILETTO A DENTE DI SEGA A SCARICA DI CONDENSATORI

CAPACITOR DISCHARGE WELDING STUDS WITH COARSE
GROBGEWINDEBOLZEN FÜR SPITZENZÜNDUNG
GOUJONS SAPIN PAR DÉCHARGE DE CONDENSATEURS
PERNOS DE VARILLA PARA SOLDAR CON DESCARGA

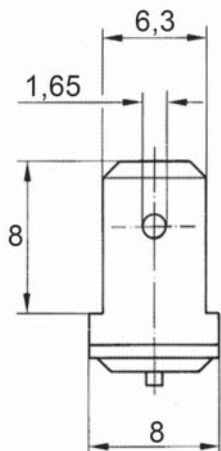


D	L + 0,6	D1 ± 0,2	D2 ± 0,08	L1 ± 0,05	A	L2
ø5	vd. sotto see below	6,5	0,75	0,8	1,4-0,6	L1-0,3

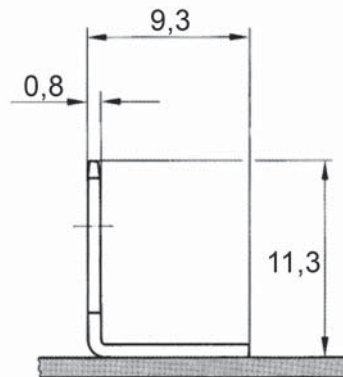
ACCIAIO 4.8 RAMATO COPPERED PLATED STEEL 4.8 STAHL 4.8 VERKUPFERT ACIER 4.8 CUIVRÉ ACERO 4.8 COBREADO			ACCIAIO INOX A2-50 STAINLESS STEEL A2-50 ROSTFREIER STAHL A2-50 INOX A2-50 INOX A2-50			ALLUMINIO AIMg3 ALUMINIUM AIMg3 ALUMINIUM AIMg3 ALUMINIUM AIMg3 ALUMINIO AIMg3		
Diametro Diameter	Lunghezza Length	Codice Code	Diametro Diameter	Lunghezza Length	Codice Code	Diametro Diameter	Lunghezza Length	Codice Code
Ø 5	9	03ARAN509	Ø 5	9	03IXAN509	Ø 5	9	03ALAN509
	14,2	03ARAN515		14,2	03IXAN515		14,2	03ALAN515
	16,5	03ARAN516		16,5	03IXAN516		16,5	03ALAN516
	18	03ARAN518		18	03IXAN518		18	03ALAN518
	25	03ARAN525		25	03IXAN525		25	03ALAN525

Disponibili su richiesta anche in Alluminio AIMg5
Available upon request in Aluminium AIMg5

FASTON A SCARICA DI CONDENSATORI
CAPACITOR DISCHARGE FASTON
FLACHSTECKER FÜR SPITZENZÜNDUNG
COSSE PAR DÉCHARGE DE CONDENSATEURS
FASTON PARA SOLDAR CON DESCARGA



PRIMA DELLA SALDATURA
 BEFORE WELDING
 VOR DEM SCHWEISSEN
 AVANT SOUDAGE
 ANTES DE SOLDAR



DOPO LA SALDATURA
 AFTER WELDING
 NACH DEM SCHWEISSEN
 APRÈS SOUDAGE
 DESPUES DE SOLDAR

FASTON SINGOLO
SINGLE FLAT PLUG TYP F1
FLACHSTECKER
COSSE SIMPLE
FASTON SIMPLE

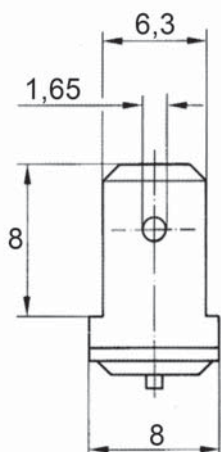


ACCIAIO 4.8 RAMATO COPPERED PLATED STEEL 4.8 STAHL 4.8 VERKUPFERT ACIER 4.8 CUIVRE ACERO 4.8 COBREADO
Codice Code
03ARFS

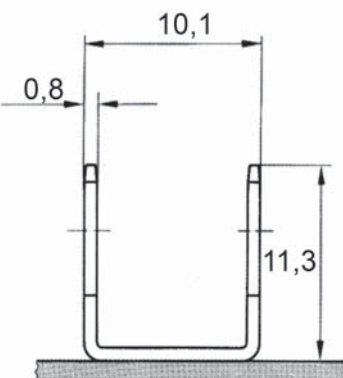
ACCIAIO INOX A2-50 STAINLESS STEEL A2-50 ROSTFREIER STAHL A2-50 INOX A2-50 INOX A2-50
Codice Code
03IXFS

ALLUMINIO AIMg3 ALUMINIUM AIMg3 ALUMINIUM AIMg3 ALUMINIUM AIMg3 ALUMINIO AIMg3
Codice Code
03ALFS

OTTONE CuZn37 BRASS CuZn37 MESSING CuZn37 LAITON CuZn37 LATON CuZn37
Codice Code
03CUFS



PRIMA DELLA SALDATURA
 BEFORE WELDING
 VOR DEM SCHWEISSEN
 AVANT SOUDAGE
 ANTES DE SOLDAR



DOPO LA SALDATURA
 AFTER WELDING
 NACH DEM SCHWEISSEN
 APRÈS SOUDAGE
 DESPUES DE SOLDAR

FASTON DOPPIO
DOUBLE FLAT PLUG TYP F2
DOPPEL FLACHSTECKER
COSSE DOUBLE
FASTON DOBLE



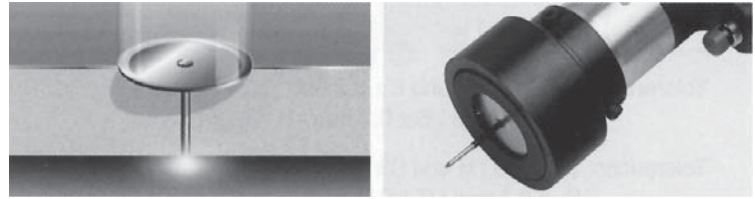
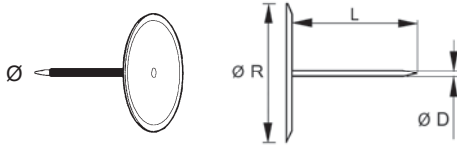
ACCIAIO 4.8 RAMATO COPPERED PLATED STEEL 4.8 STAHL 4.8 VERKUPFERT ACIER 4.8 CUIVRE ACERO 4.8 COBREADO
Codice Code
03ARFD

ACCIAIO INOX A2-50 STAINLESS STEEL A2-50 ROSTFREIER STAHL A2-50 INOX A2-50 INOX A2-50
Codice Code
03IXFD

ALLUMINIO AIMg3 ALUMINIUM AIMg3 ALUMINIUM AIMg3 ALUMINIUM AIMg3 ALUMINIO AIMg3
Codice Code
03ALFD

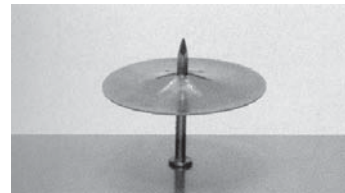
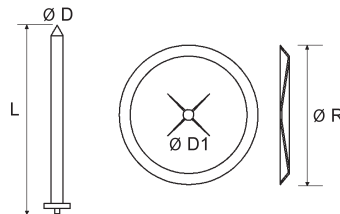
OTTONE CuZn37 BRASS CuZn37 MESSING CuZn37 LAITON CuZn37 LATON CuZn37
Codice Code
03CUFD

ARPIONCINI PER ISOLAMENTI TERMICI
CUPPED HEAD PINS WITH INSULATION
TELLERSTIFTE MIT ISOLIERUNG
CLOU D'ISOLATION
PINS DE AISLAMIENTO

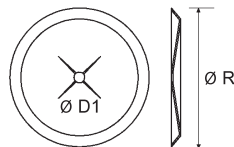


ACCIAIO 4.8 ZINCATO ZINC PLATED STEEL 4.8 STAHL VZ ACIER ZINGUÉ ACERO CINCADO			ACCIAIO INOX A2-50 STAINLESS STEEL A2-50 ROSTFREIER STAHL A2-50 INOX A2-50 INOX A2-50		
L ± 0,2	Ø D ± 0,05	R ± 0,2	L ± 0,2	Ø D ± 0,05	R ± 0,2
9,5 - 54	2	30	9,5 - 54	2	30
9,5 - 54	2.7	30 - 38	9,5 - 54	2.7	30 - 38

CHIODI PER ISOLAMENTO E CLIP
INSULATING NAILS AND CLIP



ACCIAIO 4.8 RAMATO COPPER PLATED STEEL 4.8 STAHL 4.8 VERKUPFERT ACIER 4.8 CUIVRÉ ACERO 4.8 COBREADO				ACCIAIO INOX A2-50 STAINLESS STEEL A2-50 ROSTFREIER STAHL A2-50 INOX A2-50 INOX A2-50				INOX AISI 316 STAINLESS STEEL AISI316 ROSTFREIER STAHL AISI 316 INOX AISI 316 INOX AISI 316				ALLUMINIO AIMg3 ALUMINIUM AIMg3 ALUMINIUM AIMg3 ALUMINIUM AIMg3 ALUMINIO AIMg3			
L	Ø D	Ø D1	R	L	Ø D	Ø D1	R	L	Ø D	Ø D1	R	L	Ø D	Ø D1	R
10 - 200	2	1,8	38	10 - 200	2	1,8	38	10 - 200	2	1,8	38	10 - 200	2	1,8	38
10 - 200	2,6	2,4	38	10 - 200	2,6	2,4	38	10 - 200	2,6	2,4	38	10 - 200	2,6	2,4	38
10 - 225	3	2,8	38 - 60	10 - 225	3	2,8	38 - 60	10 - 225	3	2,8	38 - 60	10 - 150	3	2,8	38 - 60



ACCIAIO 4.8 ZINCATO ZINC PLATED STEEL 4.8 STAHL VZ ACIER ZINGUÉ ACERO CINCADO		ACCIAIO INOX A2-50 STAINLESS STEEL A2-50 ROSTFREIER STAHL A2-50 INOX A2-50 INOX A2-50	
Ø D1	R	Ø D1	R
1,8	38 - 60	1,8	38 - 60
2,4	38 - 60	2,4	38 - 60
2,8	38 - 60	2,8	38 - 60